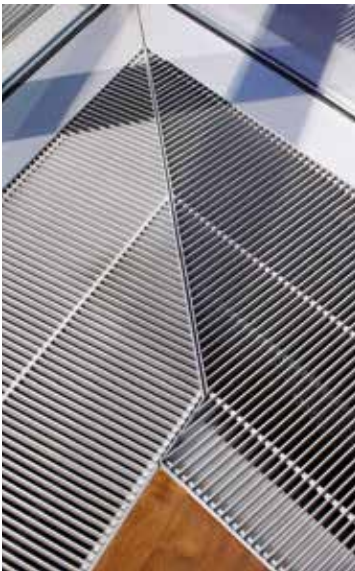
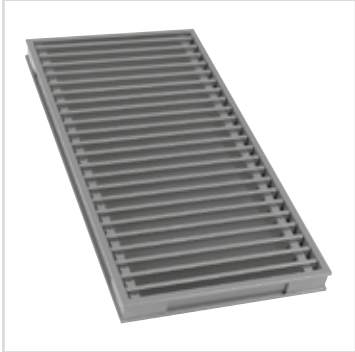


311

Convactor grille

FLOOR GRILLE

ALUMINIUM



MATERIAL

- Made from aluminium sections: AlMgSi 0.5 [according to EN 12020-2]
- Finishing: anodised in satin colour [20 microns] or powder-coated in any RAL or Syntha Pulvin colour [40 microns]
- The frame is lined with a rubber gasket to guarantee a reduced noise level

DIMENSIONS

- Bar spacing: 12.5 mm
 - Grille section: 20 x 4 mm
 - 311/1 - 311/2
 - Length floor grille: min. 100 mm - max. 3500 mm
[from 1300 mm multiple grille lengths]
 - Width floor grille: min. 100 mm - max. 1215 mm
 - 311/3:
 - Length frameless floor grille: min. 85 mm - max. 1300 mm
 - Width frameless floor grille: min. 85 mm - max. 1200 mm
- Remark: If the floor grille width > 650 mm, then an underlying support structure must be provided.*
- Effective opening = length and width - 50 mm
 - Bars arranged crosswise

FIXING

- Brackets ref. 231

TYPICAL APPLICATIONS

- Ground heating

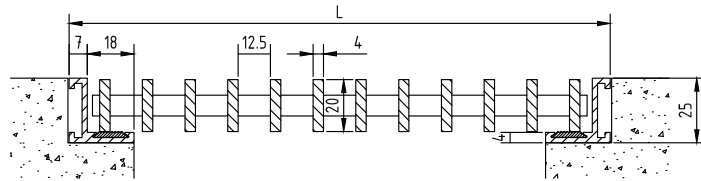
TECHNICAL SPECIFICATIONS

All properties are valid for the standard version of the Louvre, unless otherwise stated.

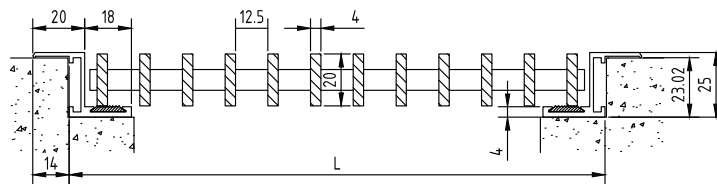
Technical data	
Visual free area	76%
Physical free area	76%

TECHNICAL DRAWINGS

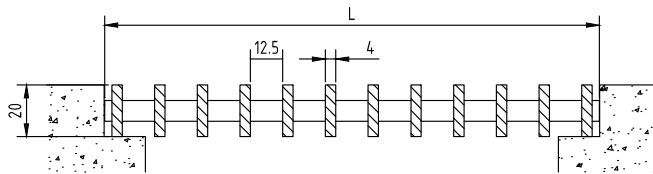
Cross-sections



311/1: Floor grille or convector cover with flangeless "L" frame



311/2: Floor grille or convector cover with flanged "Z" frame



311/3: Frameless floor grille or convector cover

